



**CLMTEXFINITY®**

The textiles' favorite



**Siron<sup>®</sup> C**

With 3-pass heat exchanger

[www.clmtexfinity.com](http://www.clmtexfinity.com)

# Siron<sup>c</sup>

With 3-pass heat exchanger

Robust construction

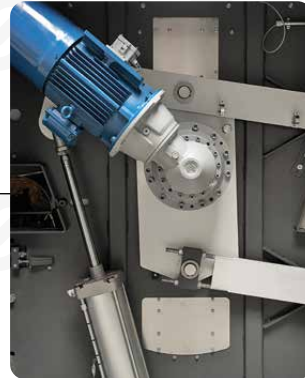


## Speed

### High Ironing Speed

Thanks to advanced engineering and the use of intelligent technology, the S.iron-c is a top performing machine, tuned for high production laundries.

- Up to 60 m/min
- Direct drive technology to control the speed of the rolls
- Speed difference between the rolls are programmable per type of linen
- 11kW motor for each roll to reach a high speed without pushing the motors to their limit
- Positioning of the rolls is used for assuring a very precise speed regulation
- The high efficiency of the S.iron-c leads to a higher speed for the same capacity of drying

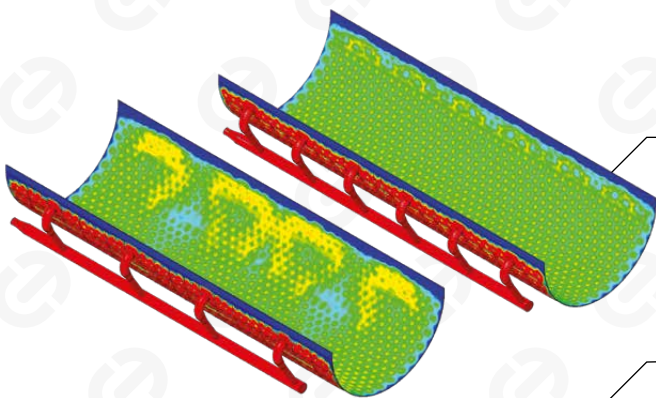


## Quality

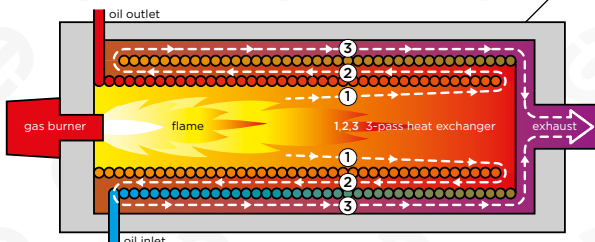
### Advanced Technology and Ironing Perfection

Our continuous efforts in maximising the reliability of the S.iron-c has led to a robust, industrial design with top quality parts. This results in a very high ironing quality and extends the lifetime of the ironer.

Easy access maintenance



- The flexible chests are designed, developed and built by CLMTextinity
- The chests are made of stainless steel (both sides)
- Unique and patented optimised oil flow without any cold spots and an extremely low pressure drop
- Each motor controlled via individual frequency inverter
- Planetary gearboxes for a long life and high efficiency, lower noise, smoother operation and higher torque
- Top brand parts: pneumatics, electronics, modulated burner, rolls, motors and drivers
- High capacity 3-pass heat exchanger
- Robust construction
- Top level isolation improving the efficiency
- State of the art safety systems monitoring the correct operation of each function
- Large diameter oil circuit pipes assure a high flow rate at relative low speeds, reducing flow losses and avoiding temperature drops in the chests
- High power axial oil pump, running at medium speed for a long life at high flow rates





Trailing edge

10-inch touch screen

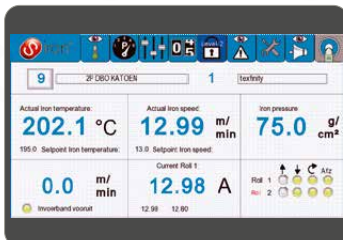


**KISS**

Keep it Simple & Straightforward

Keeping it simple, the design of the S.iron-c and its user interface makes it easy to understand, easy to use and easy to maintain. Using standard parts, widely available surely helps.

- Minimum moving parts, no belts or chains (independent and direct drive)
- Thanks to an ingenious design, oil contamination is reduced to a minimum level, boosting the lifetime of the oil in the ironer
- 100 recipes
- 10-inch colour responsive touch screen of high resolution and straightforward menu structure makes generating and changing programs effortless
- One button operation for starting and stopping an integrated line
- Integration with feeder and folder
- Easy maintenance !
- Standard parts widely available





**IoT**

## Internet of Things

Taking full advantage of the interconnectivity, the S.iron-c machines became cyber-physical solutions, continuously streaming data, leading to more automation, higher efficiency, machine learning and real-time information.

- Selection of the recipe linked with feeder/folder or indirectly to other external systems
- Storage of production data
- Connection with central database
- Integration with smart conveyors already prepared in the machine
- Operation/service/productivity via smartphone or tablet



**Smart**

## Iron Smart !

Making the S.iron-c more and more intelligent lowers the need for complex adjustments and corrects human errors. Smart machines interconnect, optimise the use of resources and generate the information you need, when you need it.

- Even at high speed, the oil maintains a constant temperature thanks to the modulated burner and highly intelligent auto-correction system
- The intelligent speed recall system, related to article and customer, assures the ironer always runs at the optimum speed for the specific type of linen and moisture retention
- Automatic speed adjustment based on humidity of the linen at the exit
- Central automatic speed control
- Central recipe selection - recipes of machines are linkable to each other
- Powerful air extraction adjustable per roll and speed depending to optimise the water evaporation per roll to reach the highest speeds
- Customer and article selection will select the optimum recipe for the line



**Flex**

## The Art of Flexibility

Continuously listening and learning from our customers made the S.iron-c a highly flexible ironing machine, adaptable to specific needs, easy to customise and integrate into existing installations.

- Several versions are possible 1, 2, 3 rolls, working width etc.
- With or without feeding belts
- Ironing all type of sheets, duvet covers, pillow cases, table linen, napkins etc.
- The S.iron-c can be connected with every type (from every brand) of feeder and folder
- Optional trailing edge guidance for wrinkle free ironing
- Optional moving guiding tape system avoids tape prints on the felts
- Integration with CLMTextfinity feeders and folders, and optional integration with other brands
- The Display can be put on the left or on the right hand side of the ironer



**Eco**

## Nature-Friendly

A well-thought design lowers the need of energy and air, leading to savings for our customers and reduces the ecological footprint.

- Thanks to the intelligent design, a well-thought chest and optimised oil distribution system, the S.iron-c has a maximum output with a minimum of resources
- Top level isolation
- Intelligent speed control avoids running the ironer at too high speeds, optimising the gaps between the sheets which reduces the losses



## Support, the next level

**We keep your textiles moving**

### Introducing the CLMTextfinity Service

In 2010, CLMTextfinity made a promise: to personally ensure the safety, reliability and functionality of every machine – without compromise. And they signed their name to it.

This vow is more than ever alive today through our dedicated and passionate people. And we're building upon their personal commitment with investments in new technology.

Our name is CLMTextfinity – and count on our next level service

### **A more personalized experience**

We put you and your customers at the center of everything we do



#### **Personalized contracts**

Flexible service packages offer maintenance and connectivity options to suit your needs.



#### **Custom notifications**

Easily customise your communication preferences to access real-time notifications and simplified, faster reporting.



#### **Event alerts**

Event-driven alerts keep you in the loop on important updates about your equipment.



#### **Academy**

Tailor made education for your technicians help you avoid downtimes, increase product lifespans and plan for the future.

# Support the next level

We are committed to being easy to do business with. That means giving you a single place to find all the information you need when you need it. Contact our teams directly via phone, chat or email, and track maintenance and equipment health in real-time.

## Technical specs

	Burner capacity	Heat exchanger	Air extraction	Electrical consumption	Production capacity	Gas consumption nat.gas	Speed
1 roll	70 kW - 390 kW	290 kW	3 kW	22 kW	480 kg/h	26.4 Nm <sup>3</sup> /h	6 - 20 m/min.
2 roll	101 kW - 550 kW	465 kW	5 kW	35 kW	1150 kg/h	42.3 Nm <sup>3</sup> /h	10 - 50 m/min.
3 roll	150 kW - 850 kW	581 kW	7 kW	50 kW	1440 kg/h	52.8 Nm <sup>3</sup> /h	10 - 60 m/min.

## Dimensions weight

		3000mm	3300mm	3500mm	4000mm
1 roll	length	3423	3423	3423	3423
	width	4435	4735	4935	5435
	height	3094	3094	3094	3094
	weight	4825 kg	5300 kg	5625 kg	6500 kg
2 roll	length	5000	5000	5000	5000
	width	4435	4735	4935	5435
	height	3094	3094	3094	3094
	weight	9650 kg	10600 kg	11250 kg	13000 kg
3 roll	length	7050	7050	7050	7050
	width	4435	4735	4935	5435
	height	3094	3094	3094	3094
	weight	14475 kg	15900 kg	16875 kg	19500 kg

**CLMTextfinity** designs, develops, manufactures, implements and services a full range of industrial laundry solutions.

Our customers range from industrial laundries and textile rental suppliers as well as hospital and hotel on-premise laundries.

The equipment is constructed in our 3 production factories in China, covering around 133.000 square meters of working space.

Customers highly value our strict standards in production, people and quality management according to ISO9001 norms and we are experienced in both Western and Asian industry cultures, standards and languages.

## Our range of products consists of:

### Category

#### ● Wash & Dry

### Name

- S.wash-t** Tunnel washer
- S.press** Water extraction press
- S.dry-p** Passthrough dryer
- X.wash-e** Washer-extractor
- X.dry-f** Front loading dryer

#### ● Sort & Handle

- S.bag** Bag system
- S.belt** Conveyors washroom
- S.load** Loading conveyors
- S.trans** Conveyors finishing
- S.control** Control systems
- X.pack** Packing machine

### Category

#### ● Full Dry Finish

### Name

- S.towel-a** Air towel folder
- S.omni-a** Air multi folder

#### ● Flatwork Finish

- S.grab** Picker
- S.feed-s** Automatic feeder
- S.feed-m** Manual feeder
- S.feed-r** Remote feeder
- S.iron-c** Chest ironer
- X.iron-c** Chest ironer
- S.fold-l** Folder large pcs
- S.fold-s** Folder small pieces
- S.fold-m** Folder multi lane



**CLMTextfinity Europe**  
 Hoge Mauw 118  
 2370 Arendonk  
 Belgium  
[www.clmtexfinity.com](http://www.clmtexfinity.com)  
 Email: [info@clmtexfinity.com](mailto:info@clmtexfinity.com)

**CLMTextfinity Asia**  
 No.18 Xiangyun Road, Dianshanhu  
 Kunshan City  
 China  
[www.clmtexfinity.com](http://www.clmtexfinity.com)  
 Email: [info@clmtexfinity.com](mailto:info@clmtexfinity.com)